



By Africans
For Africans

MOOME FOR THE DAIRY INDUSTRY: ADVISORS



We bridge data gaps
in dairy ecosystems

SOLUTIONS



Field Advisor

The elaboration of an adapted advice requires a good knowledge of the breeders' practices.

MooMe provides you with instantaneous key performance indicators in order to improve the breeding management of your farmers.

Field Advisor features

Field Advisor	
Input of analysis and milk quantity	App. Mobile + Web + SMS
Input of data related to the livestock management (feeding, type of stalling, local practice)	
Cow labeling (project membership, funding agency)	
Materials / Services Assignment	
Services	Support
Breeders/ Livestock data entry	App. Mobile + Web + SMS
Mapping	
THI inside the barn (THI equipment not included)	
Collar data for ruminating and resting times (Beta) (connected collar not included)	
Dashboard, History et Reporting mono-multi breeders	

Example of a statistical report on the herd's performance:

Date de génération	24/09/2021	Adresse	Jandouba
Client / Responsable	Moulti-Herminette	Total troupeau / Éleveur	511 / 53

En production	15	Jeunes Veaux	15	Sinistrés	15
Génisses	15	Malades	8	Têtes présentes	15
Taries	15	Vendus	15		

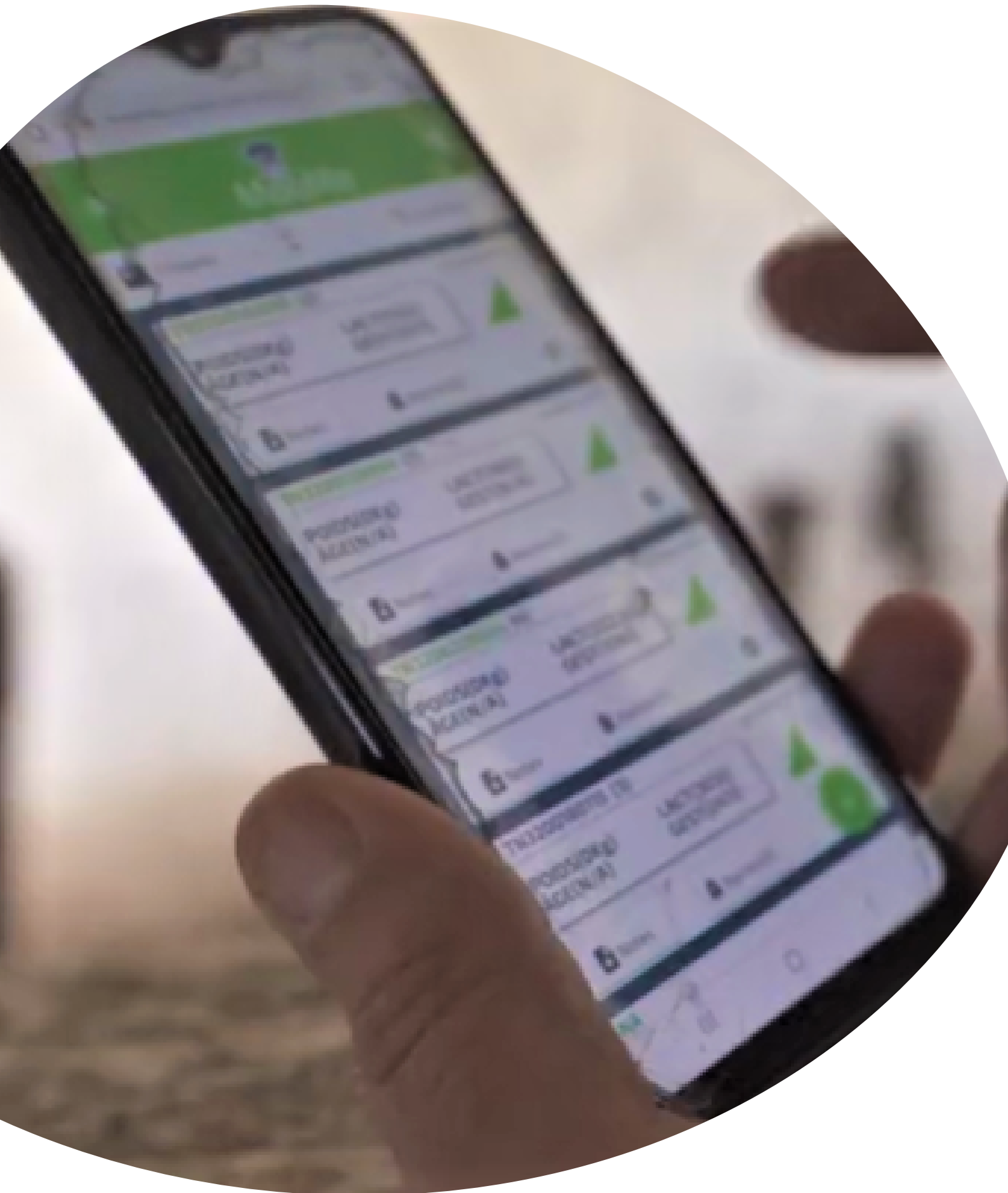
Indices de performances

IV-V(Jour)		IV-IF(Jour)		Durée Moyenne de lactation(Jour)	
Réussite en IA1(%)		Réussite en IA2(%)		Réussite en IA3(%)	

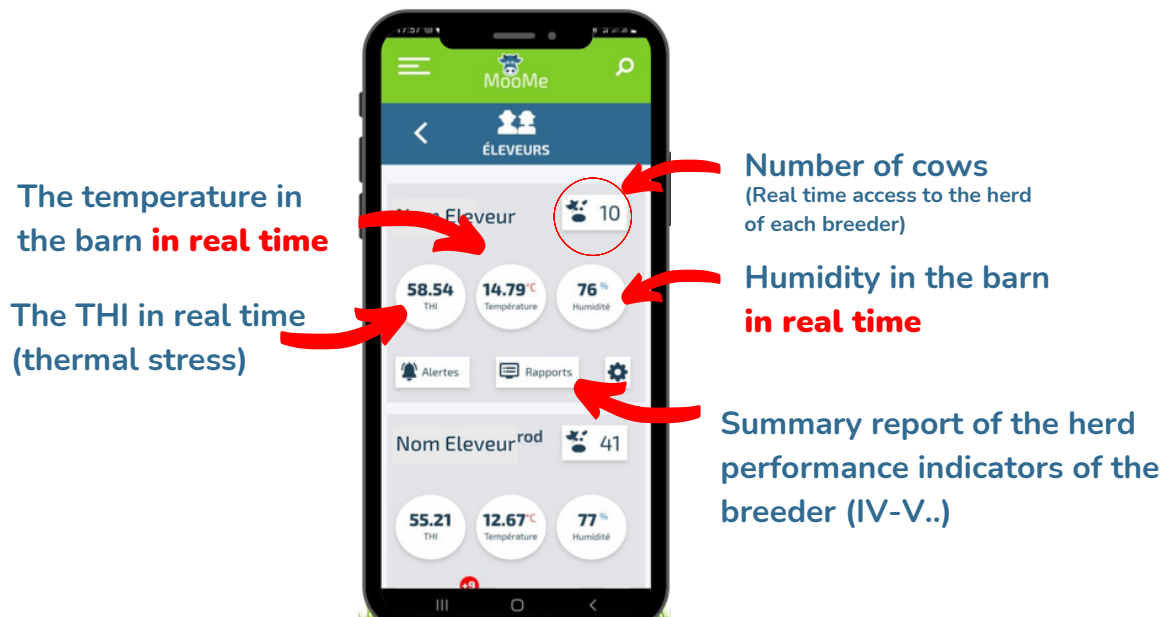


Do not waste any more time!

manage your Breeders' Portfolio in one click.



How does it work?

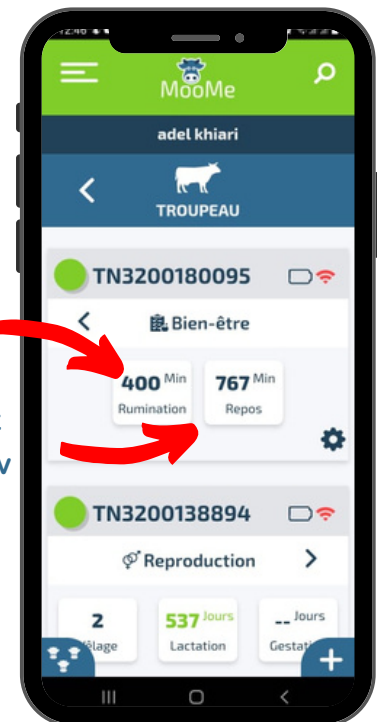


Your breeders' herd, Cow by cow...



Ruminating time/day/cow

Physical rest time/day/cow



N.B: The mobile application is available on Playstore and AppGallery



"MooMe solution has totally changed the way I used to track my breeders, I now have access to all my data any time, and especially in real-time. My history is preserved which ensures better traceability."

Khalil, Field advisor



Ensuring the quality of your milk requires meticulous monitoring of the milk from the moment it is received. MooMe provides you with the technology that enables you to remotely monitor storage and cooling operations.

Milk Collecting Center Advisor

Features of the Milk Collecting Center Advisor

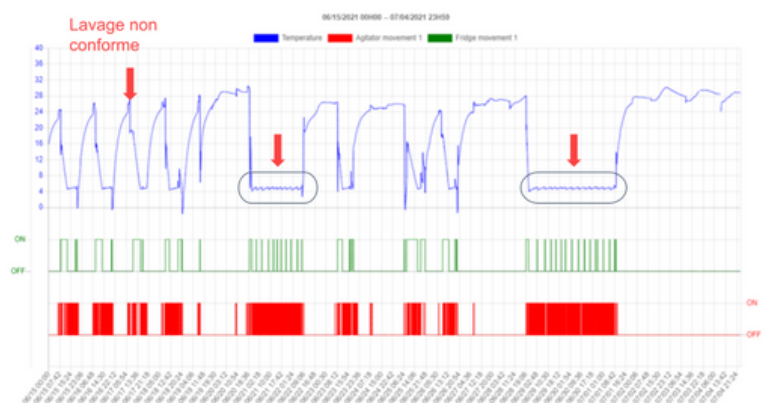
Services

Management of MCC and Tank
MCC and Tank Balance Sheet
Management of "Preventive Maintenance and Milk Storage", "Analysis", "TL", "Peddler" features
Management of alerts from MCC modules (Preventive Maintenance and Milk Storage, Analysis, TL, Peddler)
Concentrated feed stock management
Management of concentrated feed stock movements
Dashboard, History and Single-Multi MCC Reporting

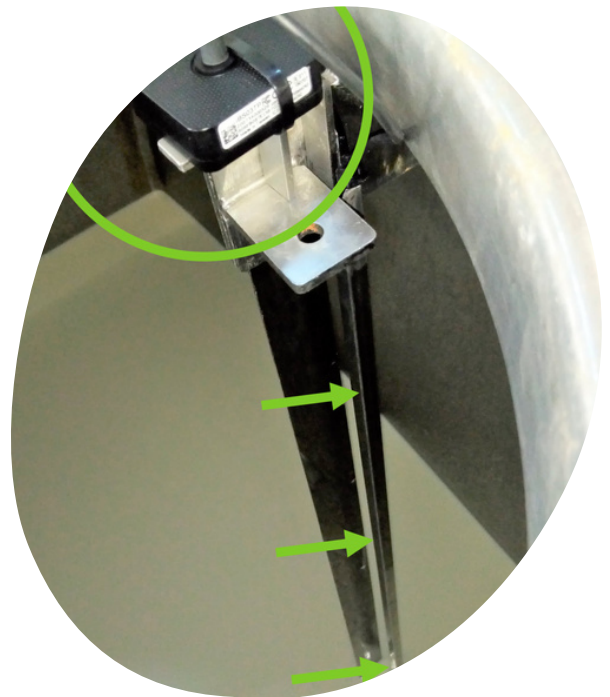
Support

App. Mobile
+
Web
+
SMS*
(*On request)

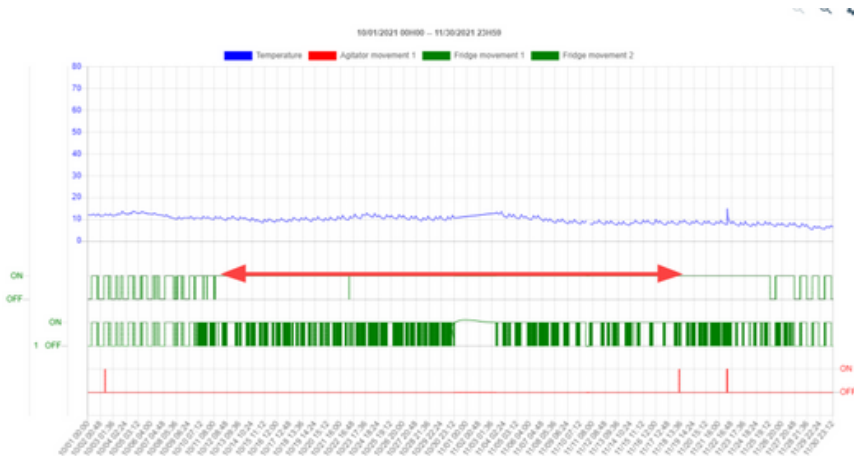
Example1: Detection of a non-compliant wash



The monitoring of the evolution of the water temperature of the washing process made the detection of the non-conformity of the operation possible on a real-time basis.

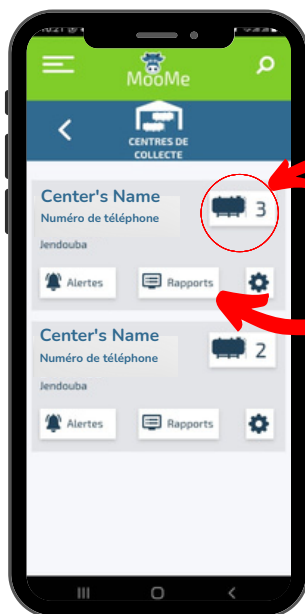


Example2: Case of energy waste



Diligent monitoring of the compressor activity led to the detection of a waste of energy: The compressor was on for a long period of time when it was supposed to be off.

How does it work?



Number of tanks/centers
(Real time monitoring of the status of each tank)

Summary report on the conditions of reception, storage, washing...

Real Time Compressor Operation

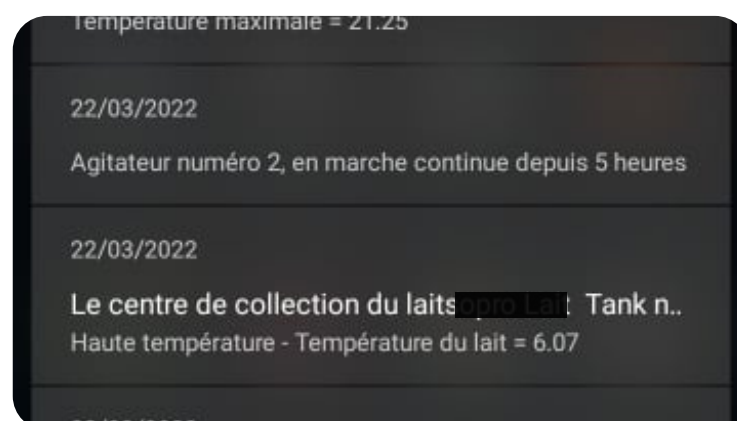
Temperature in the tank in real time

Operation of the agitator in real time



N.B: The mobile application is available on Playstore and AppGallery

Example of notifications generated by the application



Technical features of the probe

Battery life	3.2 years of autonomy (ADV interval of 30s)
Battery	CR2450 x 1
Operating temperature	-50°C à 150°C
Waterproofing	IP67
Bluetooth®	Low Energy Bluetooth 5 (BLE5)
BLE range	100M



Technical features of the milk volume sensor

Battery life	1.8~2.8 years of autonomy (ADV interval of 60s)
Battery	CR2450 x 1
Operating temperature	-20°C to 75°C
Waterproofing	IP67
Bluetooth®	Low Energy Bluetooth 5 (BLE5)
BLE range	100M
Distance measurement	10cm ~300cm



Technical features of the Milk Tank / Compressor sensor

Battery life	1 year of autonomy (ADV interval of 5s)
Battery	CR2450 x 1
Operating temperature	-20°C to 75°C
Waterproofing	IP67
Bluetooth®	Low Energy Bluetooth 5 (BLE5)
BLE range	100M



Technical features of the MCC's data acquisition system

WIFI (Support for 802.11b/g/n).

Humidity	Humidity Max 95%, non-condensing, relative humidity
Operating temperature	-20°C to 60°C
Waterproofing	IP67
Bluetooth®	Bluetooth support Low Energy (long range mode)
Capacity	Can read up to 200 BLE devices at the same time
Coverage radius	200 M





شكراً
Thank you

Tel. +216 31 40 73 55

Web. moome.io

FB. facebook.com/moome.tn

MooMe is developed by lifeye.io

Mail. hello@moome.io

Béja Office : Cité Taieb Mhiri, Amdoun, Béja.

Tunis Office : 13 bis, Rue Hassan et Houssain, Menzah 4, Tunis.